

CNC Cylindrical Grinder

MODEL		PGP-3506CNC PGA-3545CNC	PGP-3508CNC PGA-3565CNC	PGP-3510CNC PGA-3585CNC	
Grinding Capacity	Swing over table	350 mm			
	Distance between centers	PGP	600 mm	800 mm	1000 mm
		PGA	450 mm	650 mm	850 mm
	Max. grinding diameter	ø320 mm			
	Max. grinding wheel sizes	ø510 x 120 x 203.2 mm (Opt. ø610x160x203.2mm)			
Max. load held between centers	150 kg				
Control System	Controller	FANUC (OPT. SIEMENS / MITSUBISHI)			
Feed	Min. resolution on X-axis	0.0001 mm			
	X-axis feed speed	8 M/min			
	Min. resolution on Z-axis	0.0001 mm			
	Z-axis feed speed	10 M/min			
	Manual swiveling angle on Z-axis	±10°	±8°	±6°	
Workhead	Spindle speed	5-750 r.p.m.			
	Center	MT. 4 (Opt. MT. 5)			
	Swiveling angle	90°-30°			
Tailstock	Travel distance	40 mm			
	Center	MT. 4			
Drive Motors	Weel spindle motor	10 HP (Opt. 15HP)			
	Workhead feed motor	1.8kW(F) / 2.2 kW(M)			
	Spindle motor	1.5 kW			
	Table feed motor	1.8kW(F) / 2.2 kW(M)			
	Hydraulic pump motor	1 HP			
	Wheel spindle lub. pump	1/4 HP			
	Coolant pump	1/4 HP			
	Oil cooler	1 HP			
Coolant / Tank	Oil tank capacity	30 L			
	Wheelhead lub. oil tank capacity	30 L			
	Coolant tank capacity	160 L			
Machine	Machine weight	6600 kg	7460 kg	8890 kg	
	Machine length	3642 mm	3942 mm	4342 mm	
	Machine Width x Height	2375 x 1602 mm			

• The specifications and design characteristics shown in this catalog are subject to change without prior notice.

Standard Accessories:

- CNC control: FANUC
- Coolant tank with pump
- Heat exchanger for electrical cabinet
- Grinding wheel + Flange
- Grinding wheel extracting tools
- Diamond dressing kit
- Oil tank with pump
- X-axis linear scale
- Frequency inverter (for grinding wheel)
- Two-point steady rest
- Workpiece holder
- Paper filter
- Wheel balancing stand and balancing arbor
- Oil cooler
- Workpiece clamping sensing device

Optional Accessories:

- Z-axis linear scale
- Workpiece driving dog
- Oil mist collector
- Air conditioner for electrical cabinet
- Outside diameter measuring device
- Gap eliminator + anti-crash device
- Magnetic coolant separator
- Grinding wheel lift
- Grinding wheel lifting tool
- Automatic wheel balancing device
- Fully enclosed splash guard
- Hydraulic tailstock with manual adjustment device
- Three-jaw chuck with driving plate
- Hydraulic three-jaw chuck with rotary cylinder

PRIMERO MACHINE TOOLS CORP.

No.158 Yuan Huan South Road, Feng Yuan Dist.,
Taichung City, Taiwan.

Tel: 886-4-2515 6651 Fax: 886-4-2514 6657

- PLUNGE FEED
PGP series
- ANGULAR FEED
PGA series



LATEST ADVANCES IN
CYLINDRICAL GRINDING



CNC CYLINDRICAL GRINDER

PGP series - PLUNGE FEED

PGA series - ANGULAR FEED



CNC CONTROL Powerful Function Easy To Operate

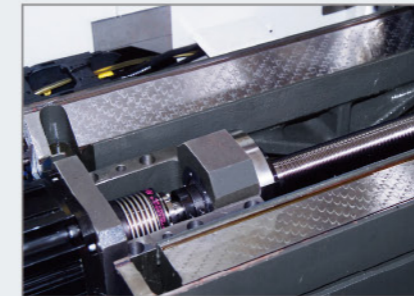
PRIMERO CNC Cylindrical Grinder is equipped with an advanced CNC control, featuring easy understanding and learning. It enables the operator to operate the machine in a short time. Another benefits are accurate size control and capable of producing extra fine finish on workpiece.

Massive Base High Rigidity Deformation-free for Years

- The machine base is manufactured from high quality Meehanite cast iron, tempered and stress relieved for deformation-free performance even after years of operation.
- The ruggedly constructed base in combination with scientific rib reinforcement exhibit optimal rigidity and stability, ensuring exceptional grinding accuracy and quality.
- The oversized "V" and flat slide ways helps to increase stability.
- The wheel head moves on double "V" slideways.



- Manual Tailstock (Standard)
- Hydraulic Tailstock (Optional)



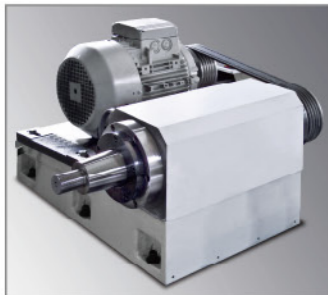
- Precision Ball Screw
- Coolant Through Ball Screw (Optional)



End Face Measuring Device (Optional)



Three-dimensional Coordinate Measuring



Exclusively Designed Hydro-Static and Hydro-dynamic Bearings

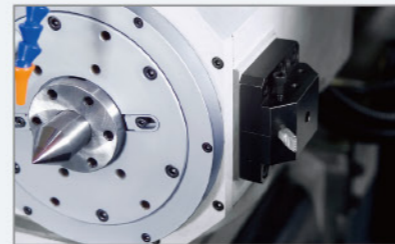
Wheel Head

The wheel head is specially designed with a combination of hydro-static and hydro-dynamic bearings which eliminate friction between metal parts. This results in ultra-high rigidity and shock-absorbing capabilities, that greatly increasing heavy grinding capacity.



Work Head

- The work head employs high precision angular contact ball bearings, featuring outstanding load-resisting capability in axial and radial direction.
- The work head is specially designed with air floating function that makes work head movement effortless and smooth.
- The work head spindle is driven by a servo motor.
- Coolant proof.
- The spindle is designed with labyrinth circulated cooling.
- Air pressure type coolant exhaust and dust removing.

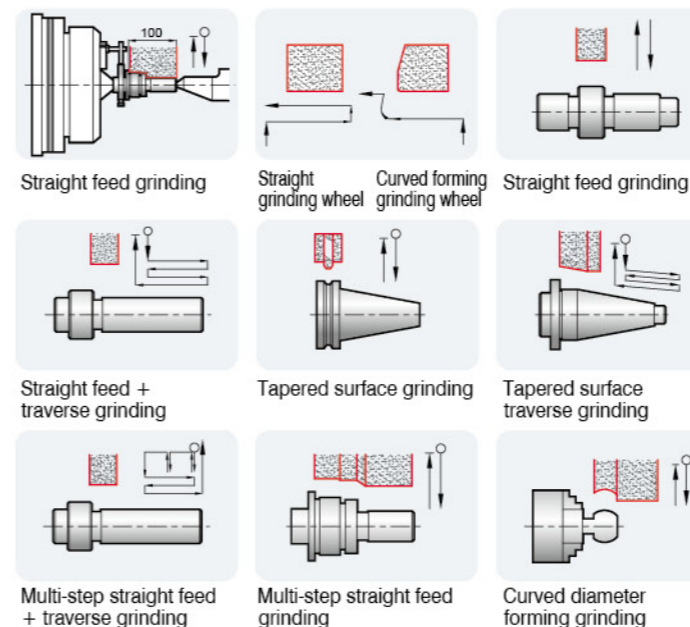


- Wheel Dressing Device



- Table Swiveling

Plunge Feed Grinding Examples



Angular Feed Grinding Examples

